

# PROTECT and CUSTOMIZE



CUSTOM FRP RACKMOUNT CASES

# CUSTOM RACKMOUNT CASES

ECS Case invented the 19" rackmount case in 1969 and has provided the leading rackmount solutions since. The first rackmounts were FRP composite, and to this day FRP Rackmount Cases remain the ideal balance of rugged durability, sizing options and effective shock and vibration protection.

FRP Rackmount cases provide unparalleled design flexibility and generous sway space for shock and vibration attenuation. These versatile rackmount cases can be configured to enclose a wide range of equipment sizes, weights and special features.

- FRP Composite material
- Hermetically sealed
- Recessed, stainless steel hardware
- Two removable covers to allow electronic equipment to be accessed from front or back

## Options

- EMI Shielding
- Case-to-case stacking rails
- Custom shock systems
- Fan assisted cooling
- Shelves
- Deck mounting plate
- D-Ring lift
- Dust boots

## UNRIVALED PROTECTION

Two (2) Removable Covers

Recessed, Stainless Steel Hardware

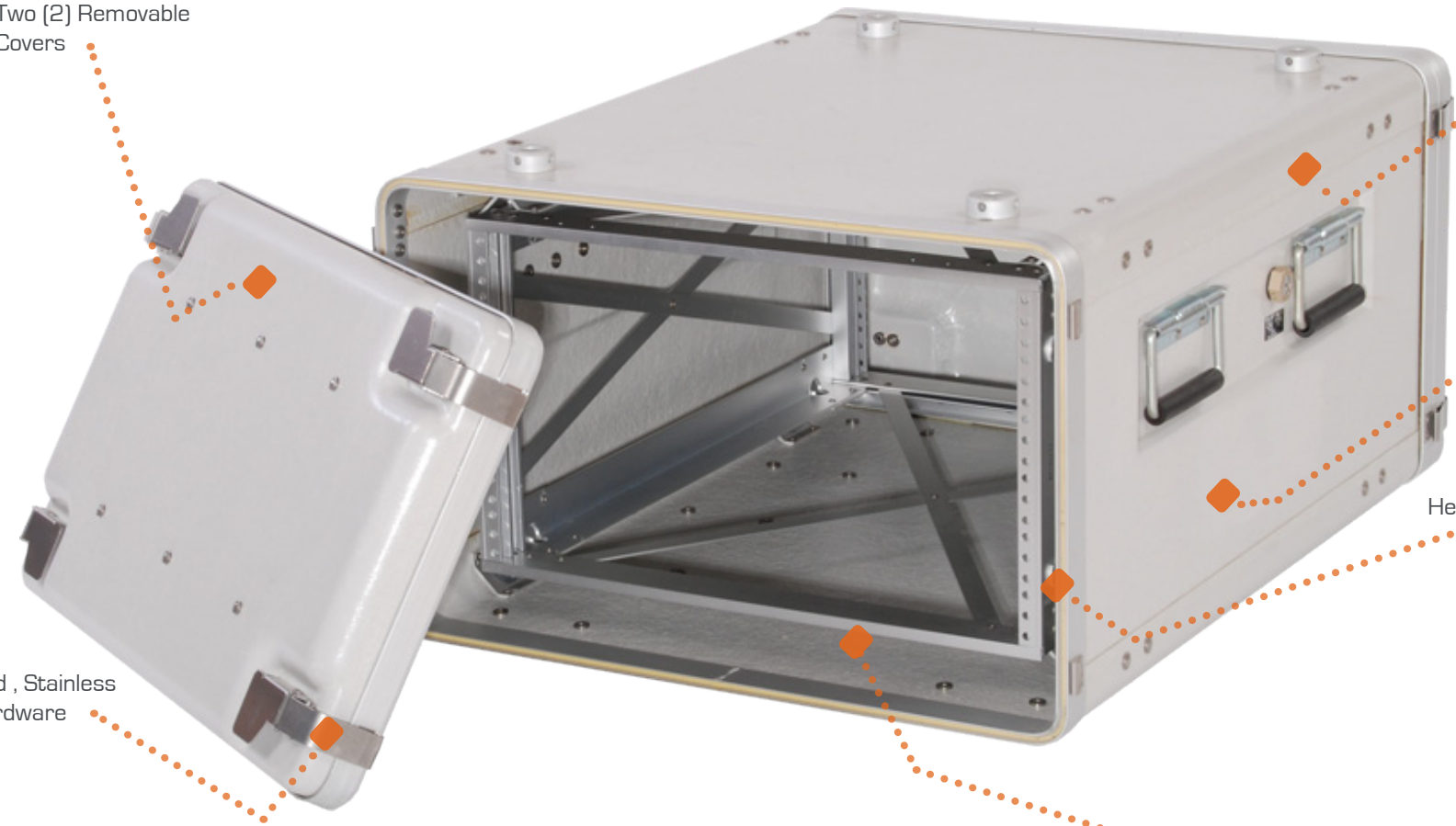
## SUPERIOR DESIGN

FRP Composite Case Exterior

Massive Variety of Configurations Available

Hermetically Sealed

CEA-310 Rackmount Frame with High Performance Shock Mounts Available



## Performance Tested for Harsh Operational Conditions

**ECS cases are tested in accordance with MIL-STD-810G:**

### High and Low Temperature

Proven performance in temperature extremes ranging from -65° F to +185° F.

### Drop Testing

Able to withstand the rigors of deployment - drop tested from a height of 24 to 48 inches. Impacts conducted on all corners, flat surfaces and edges for a total of 26 drops.

### Basic Transportation Vibration

Built to move, ECS cases are exposed to vibration environments for a duration of 30 minutes per mutually perpendicular axis.

### Loose Cargo Bounce

Upright and with the covers in place, ECS cases show no damage and/or degradation when exposed to Loose Cargo Transportation environments for 30 minutes.

### Water Submersion/Wind Blown Rain

ECS cases show no evidence of water intrusion and/or damage as a result of exposure to 40 mph wind blown rain conditions.

### Wind Blown Sand and Dust

ECS cases are desert ready and show no evidence of damage and/or sand or dust intrusion.

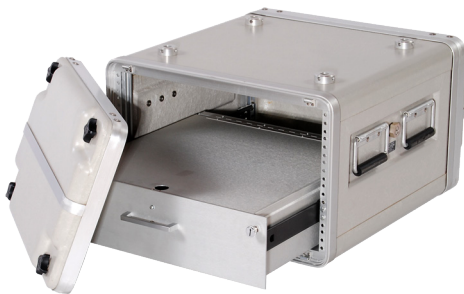
### Fungus Growth

ECS case materials will not support fungus growth.

### Low Pressure

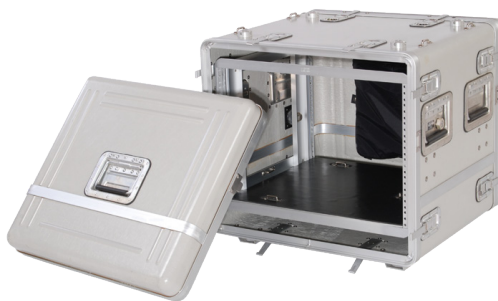
ECS cases are not damaged and/or degraded when exposed to low pressure environments.

# CUSTOM FRP RACKMOUNT SPECIFICATIONS



## 2000 Rigid Rack

The smallest, non-shock isolated rackmount case. Optional latching drawer



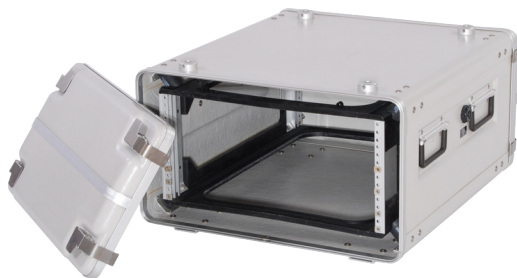
## 3000 Unlimited Rack

Perfect for large payloads and is available in unlimited sizes. Optional 1U sliding equipment shelf and work surface.



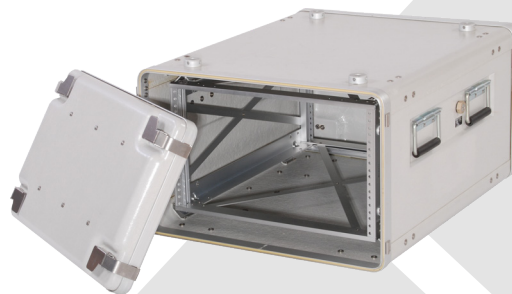
## 4000 Compact Rack

The smallest shock isolated envelope. Riveted aluminum rack with eight multi-axis shock mounts.



## 5000 Standard Rack

For equipment with normal fragility. Riveted aluminum rack with eight diagonally attached shock mounts.



## 6000 High Fragility Rack

Has increased sway space for equipment with high fragility. Riveted aluminum rack with eight diagonally attached shock mounts.

## About ECS CASE

ECS Case offers a full line of factory direct shipping products as well as the most advanced custom packaging solutions available today. Commercial-off-the-shelf products include rackmount enclosures, medical cases, weapons solutions, shipping, storage, drawer, and footlocker cases available on demand.

Focused Innovation, Unrivaled Results.



Making the Case Since 1954

3560 Rogue River Highway  
Grants Pass, Oregon 97527

Toll-free: 877-426-0030

Fax: 541-474-2479

[ECScase.com](http://ECScase.com)